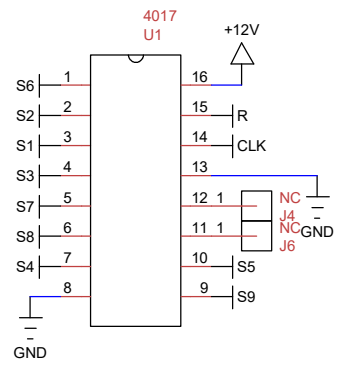
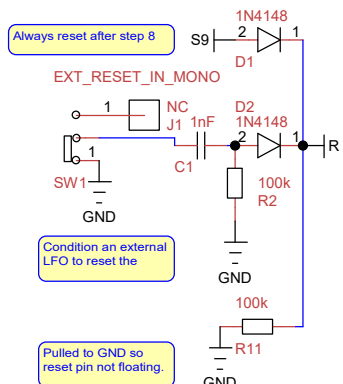


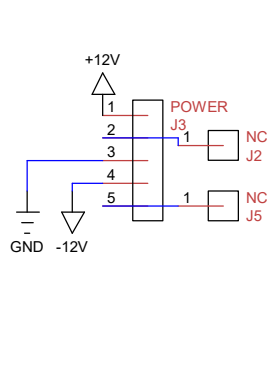
### 4017 Decade Counter



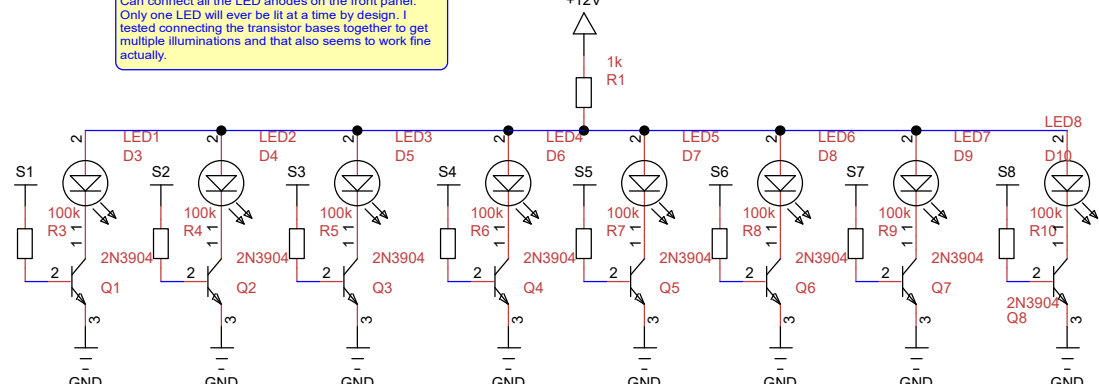
### Reset Pin



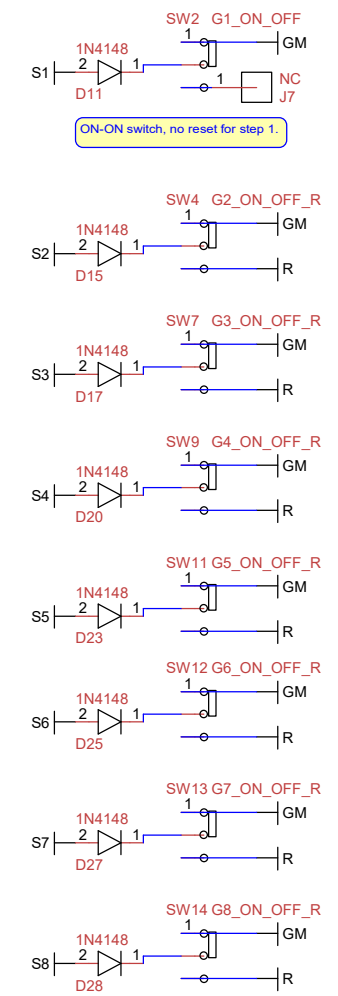
### Power



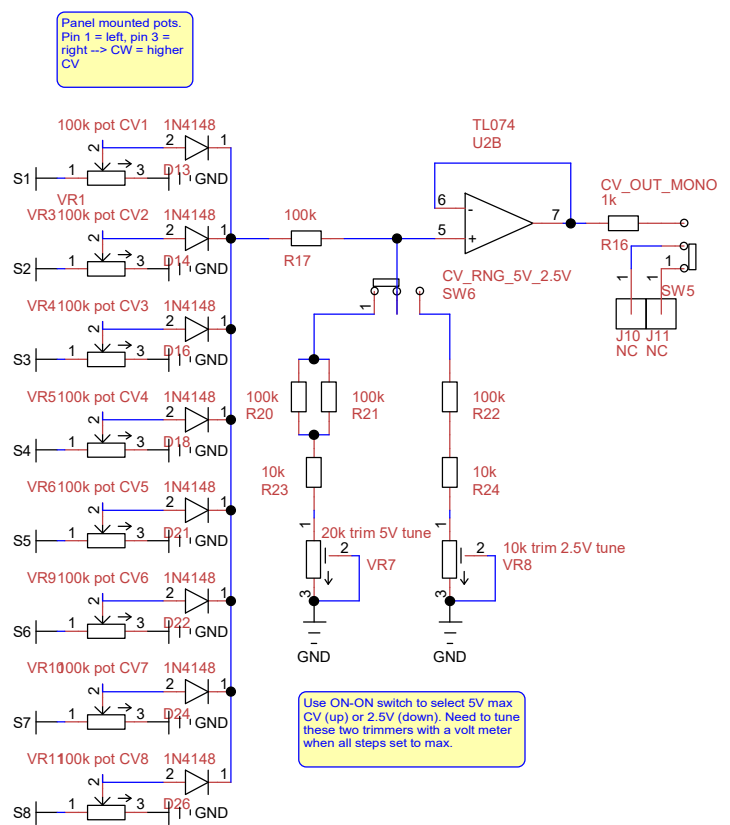
### Step Indicator LEDs



### Gate On/Off/Reset Switches



### Step Control Voltage

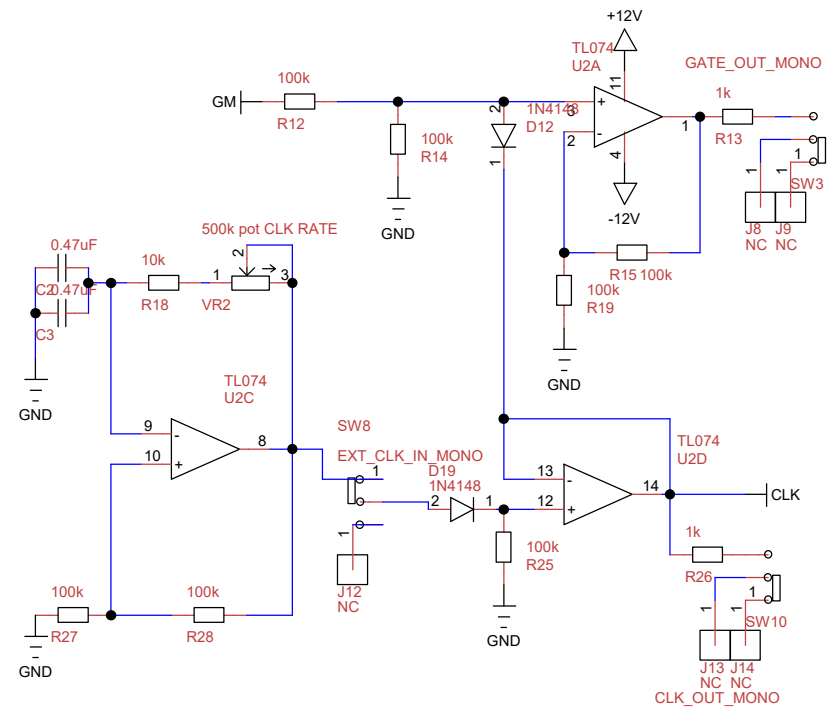


### MISC NOTES

Don't forget: All of the bodies (not pins) of the panel mounted components will be connected to each other via the metal front panel. One of them needs to be tied to GND.

The mono jack switch states in the schematic are shown when no cable is plugged, i.e. "normally connected" by default (normal = unplugged). E.g. the reset jack is tied to GND normally, until a cable is plugged, then the cable's tip is sent to reset pin.

### Internal Clock and Gate Output



- FEATURES**
- \* 8 Steps
  - \* Select CV range from 0 - 5V (switch up) or 2.5V (down).
  - \* Turn gates ON (up) or OFF (middle).
  - \* Flip step switch down to reset at this step. Or reset with external signal.
  - \* Use internal clock or connect an external clock.
  - \* Output whichever clock is being used.

Title		4017 Based 8-Step Sequencer	
Author		Eric Driscoll -- Adapted from Mortiz Klein	
File	C:\... tinCAD 8-step sequencer schematic.dsn		Document
Revision	1.0	Date	29 July 2023
		Sheets	1 of 1